

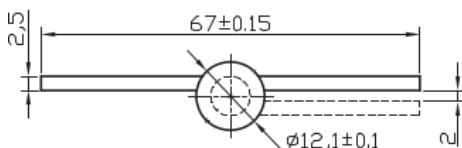
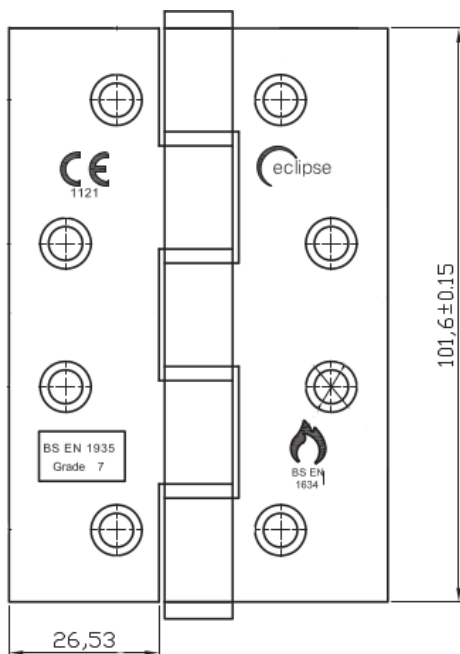
Stainless Steel Grade 7 4x2.5/8" washered bearing hinge



The Eclipse stainless steel Grade 7 washered bearing hinge is a fire rated washered hinge designed for use on doors that require a slim knuckle. Frisco manufacture the hinge with 4 washers for a smooth and seamless action. The 67mm wide hinge is a solution for fitting a 102mm hinge on a 33mm wide door. Popular with the residential and house build markets they are the ideal product to retro fit old DSW & DPBW brass butt hinges.



- CE 1121 marked
- Grade 7 (40 kgs)
- EN 1935 performance tested to 200,000 cycles
- EN 1634 fire rated
- FD 30 fire rated on timber doors
- 8x1" anti snap stainless steel pozi drive screws supplied.
- Suitable for doors 33-44mm thick
- 40 kg max door weight includes furniture & fixtures that increase door mass
- To comply to fire ratings intumescent hinge pads must be used with product



Ref	Size	Grade	Qty	Finish
14908	102x67x2.5mm	7	2pk	SSS
14909	102x67x2.5mm	7	2pk	PSS
14925	102x67x2.5mm	7	2pk	EBP